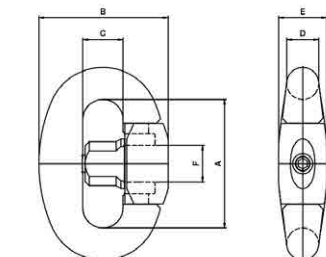
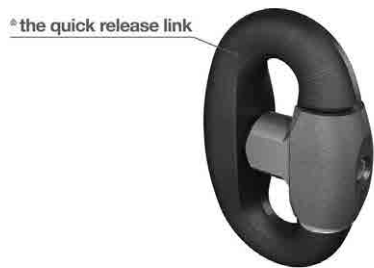
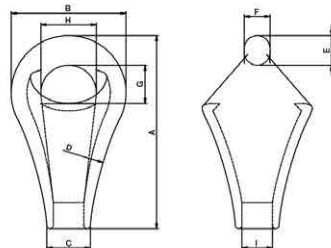


ネマッグ クイックリリースリンク



形式 Size no.	使用荷重 Working load (kg)	破断荷重 Breaking load (kg)	寸法 Dimensions						計算質量 Weight (kg)
			A (mm)	B (mm)	C (mm)	D (mm)	E (mm)	F (mm)	
4	3,000	25,000	76	76	24.5	19	30	21	0.9
5	4,500	33,000	84	84	27	21	32.5	23	1.2
6	5,000	37,500	92	92	29.5	23	35	25	1.5
7	7,000	49,000	100	100	32	25	38	28	2.0
8	8,000	54,000	108	108	34.5	27	40.5	31	2.5
9	9,500	60,000	116	116	37	29	43.5	34	3.1
10	12,000	75,000	128	128	40.5	32	48	37	4.4
11	15,000	95,000	140	140	44	35	53	40	5.7
12	17,000	110,000	152	152	47.5	38	57	43	7.2
13	21,000	135,000	164	164	51	41	61.5	46	8.7
14	26,000	160,000	176	173	54	44	66	50	11
15	30,000	175,000	188	188	58	47	70.5	52	13.5
17	42,500	260,000	222	222	68	56	84	62	23

ネマッグ ロープピアソケット



形式 Size no.	適応ロープ径 Wire rope ϕ (mm)	使用荷重 Working load (kg)	破断荷重 Breaking load (kg)	寸法 Dimensions									計算質量 Weight (kg)
				A (mm)	B (mm)	C (mm)	D (mm)	E (mm)	F (mm)	G (mm)	H (mm)	I (mm)	
1	10~11	1,500	10,000	81	48	22	195	12	11.5	20	24	12	0.4
2	12~13	2,000	14,000	95	56	25	195	15.5	13.5	22	25	14	0.5
3	14~15	2,500	17,500	109	64	28	220	17.5	15.5	24	29	16	0.6
4	16~17	3,000	22,500	123	70	31	220	19.5	17.5	26	31	18	0.9
5	18~19	4,500	27,500	135	84	33	245	21	19	30	42	20	1.3
6	20~21	5,000	35,000	152	84	36	310	23	21	33	38	23	1.7
7	22~24	7,000	42,500	166	100	40	310	26	23	37	48	26	2.3
8	25~27	8,000	52,500	186	100	43	350	28	25	39	44	29	3.2
9	28~30	11,000	70,000	202	120	45	350	31	27	40	58	32	4.1
10	31~33	13,000	85,000	222	120	52	445	32	28.5	45	56	37	5.2
11	34~36	15,000	95,000	239	142	55	445	36	31.5	50	70	40	6.4
12	37~39	17,000	110,000	264	142	60	495	39	34.5	51	64	41	7.9
13	40~42	21,000	125,000	285	166	63	555	43	36.5	59	80	44	9.5
14	43~45	26,000	155,000	312	166	68	595	47	40	62	72	48	11.2
15	46~48	30,000	180,000	337	170	75	595	51	44	66	68	53	13
17	52~56	42,500	240,000	400	220	84	880	60	54	75	90	59	23